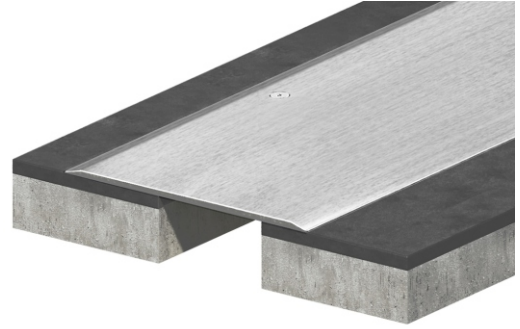
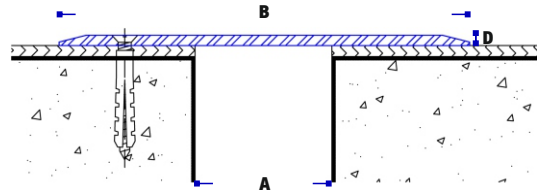


- Joints with large movements of finished floors in luxury areas
- Easy to install and inspect
- Perfect appearance
- A.D.A. compliant
- Large movement capability
- FIRE RESISTANT with melting point at 1400°C



**⚠ For areas with heavy pedestrian traffic, vehicular or forklift truck with solid tires traffic. Detailed third party load capacity test report available.**



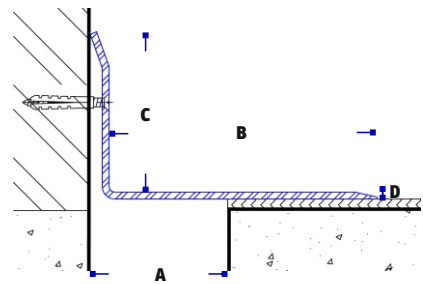
**F.SS-PL**

**Materials:**

- **F.SS-PL, 2F.SS-PL, 3F.SS-PL, F.SS-GR:**  
Stainless steel plate AISI 304 or AISI 316 predrilled with countersunk screws every 30-40cm.

**F.SS-VL:**

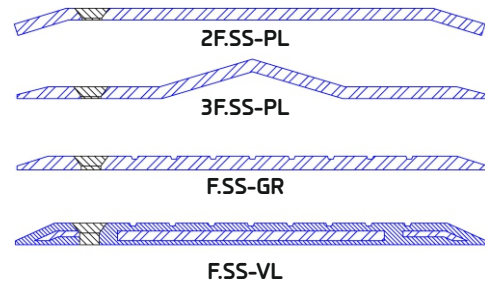
Stainless steel plate AISI 304 or AISI 316 encapsulated in EPDM rubber with following properties:



**F.SS-PL/C**

NO	Property	Test Method	Unit	Test Result
1	Hardness	ASTM D/2240	Shore A	60±5
2	Tensile Strength	ASTM D/412	Mpa	>16
3	Elongation at Break	ASTM D/412	%	>350
4	Tear Strength	ASTM D/624	Kgr / cm	>10
5	Abrasion	ASM D2228	Mm3	>165
6	Compression Set	ASTM /D/395-03 Method B70°C,70h, 24%	%	>27
7	Ozone Resistance	ASTM D1149-99 70h, 38°C, 50pphm 20%Elongation	Visual Examination	No cracks
Heat Aging Results with the following conditions (70h, 100°C)				
8	Elongation at Break Mean Variation	ASTM D573 - 04	%	≤20
9	Tensile Strength Mean Variation	ASTM D573 - 04	%	≤20

- Other widths, thicknesses grooves available upon request, according required movement capability.
- Separate water-barrier and fire-barrier products available.



TYPE	JOINT WIDTH 'A'	EXPOSED SURFACE 'B'	CORNER PROFILE HEIGHT 'C'	PLATE THICKNESS 'D'	TOTAL MOVEMENT
F.SS-PL 50	50	120	-	3-4-5	70
F.SS-PL 75	75	140	-	3-4-5	90
F.SS-PL 100	100	180	-	3-4-5	130
F.SS-PL 125	125	200	-	3-4-5	150
F.SS-PL 150	150	240	-	4-5	190
F.SS-PL 200	200	300	-	4-5	240
F.SS-PL/C 50	50	80	60	1,5-2-2,5	120
F.SS-PL/C 75	75	100	60	1,5-2-2,5	140
F.SS-PL/C 100	100	140	60	1,5-2-2,5	230
F.SS-PL/C 125	125	160	60	1,5-2-2,5	200
F.SS-PL/C 150	150	200	60	1,5-2-2,5	240
F.SS-PL/C 200	200	250	60	1,5-2-2,5	300

Dimensions in mm

## Packaging:

- Stainless steel plates in standard 3m long pieces
- Custom lengths available upon request.

## Installation guidelines:

- Separate installation instructions are available for each product series.
- Installation instructions must be carefully reviewed prior to starting work.
- Additional, tailormade instructions can be provided upon request.
- Rigid fixing substrate is of prime necessity for all applications.
- Where separate water-barrier or fire-barrier products are required, install these first following respective installation instructions.

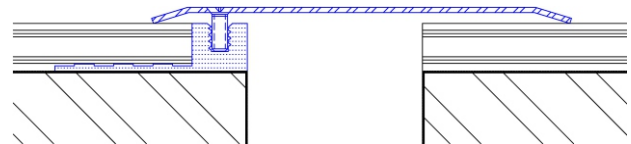
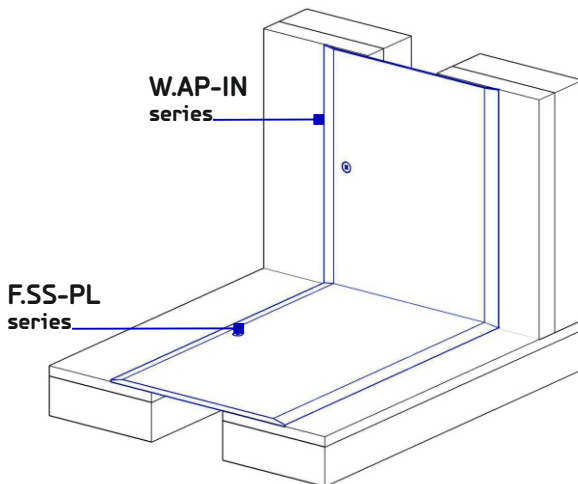
## Health and Safety:

- These products are for industrial use only by trained operatives.
- They are pre-manufactured solid items that do not contain or release any chemicals under normal conditions of use.

## Storage & handling:

- Parts should not be exposed to direct sunlight or weather conditions. Recommended storage temperature: 10°C - 28°C.
  - Place parts off the ground and keep them protected from construction activities.
  - Handle parts with proper care so as not to injure the finished (exposed) surfaces.
  - Ensure that after installation the expansion joint covers are protected from damage due other construction activities in nearby areas.
  - Refer to our separate sheet 'Care & Maintenance Instructions' for cleaning guidelines.
- > For storage and handling instructions of any other related materials (mastic sealants, chemical anchors etc) refer to related manufacturer datasheet.

## MATCHING PROFILES FOR WALLS - CEILINGS



**W.AP-IN**

## Product guarantee:

ACP HELLAS supplies products that comply with the properties included in the current catalogues & datasheets.

In the unlikely event that products supplied are proved not to comply with these properties, then we will replace the non-compliant product or refund the purchase price. ACP HELLAS does not guarantee the installation of the products as it does not have control over the installation or end use of the products.

Any suspected defects must be reported to ACP-HELLAS in writing within twenty (20) working days of being detected. ACP-HELLAS makes no warranty as to merchantability or fitness for a particular purpose and this warranty is in lieu of all other warranties express or implied.

ACP-HELLAS shall not be liable for damages of any sort including remote or consequential damages, down time, or delay.

### ACP HELLAS LTD

Mylopotamou 24 Str. Athens 115 26, GREECE  
tel: +30 210 6928309, +30 210 6917665  
fax: +30 210 6928310

info@acp-hellas.com  
www.acp-hellas.com



copyright 2018 ACP HELLAS LTD